

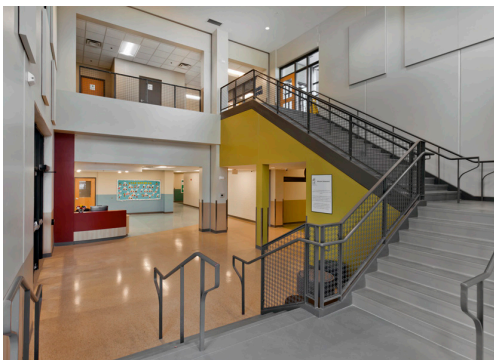


## Twin Cities International School

RJM Construction was selected by Twin Cities International School to build their new facility.

The project included the renovation of an existing building as well as an addition. The facility now features an auditorium, cafeteria, classrooms, media center, student center, and gymnasium.

Working under a condensed schedule, crews began by relocating utility mains and remediating contaminated soils. Encroaching the start of the school year, temporary bussing accommodations were made while the project was completed.



### PROJECT SUMMARY

CLIENT	Twin Cities International School
LOCATION	Minneapolis, MN
MARKET	Community
PROJECT TYPE	Education
SQUARE FEET	20,000
ARCHITECT	LSE Architects