



Plymouth Community Center

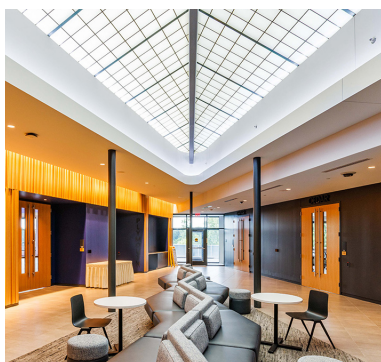
The City of Plymouth partnered with RJM to expand their current community center to 76,000-SF and feature numerous amenities

RJM Construction, HGA Architects, and the City of Plymouth teamed up to build the newly renovated and expanded community center. The new facility includes an Event Wing, Education Wing, and an Active Wing.

The project was completed in the summer of 2022.

The facility includes two full-size gymnasiums, a K.U.B.E indoor playground, a new all-season indoor walking track, rooms for various educational and recreational activities, dance and fitness studios, an art gallery, and more. This is an energy-efficient, state-of-the-art design using sustainable materials and technology.

From Solatube lighting to quality recycled materials on various components, it demonstrates the innovation and strong collaboration of the entire team.



PROJECT SUMMARY

CLIENT	The City of Plymouth
LOCATION	Plymouth, MN
MARKET	Community
PROJECT TYPE	Sports and Recreation
SQUARE FEET	105,000
ARCHITECT	HGA Architects